



Cordex Data Extractor

▪ Buy a license and Installing

The installation process for the tool is simple and hassle-free. Upon acquiring a license, you will be provided with a utility called "ID Finder." Share your ID with us, and in return, you will receive the installer for the registered version. Execute the installer and the tool will be installed effortlessly, requiring no additional activation key. After installation, you can easily access the tool either by clicking on the desktop shortcut or by searching for "Cordex Data Extractor" in your computer's program list.

How does it work?

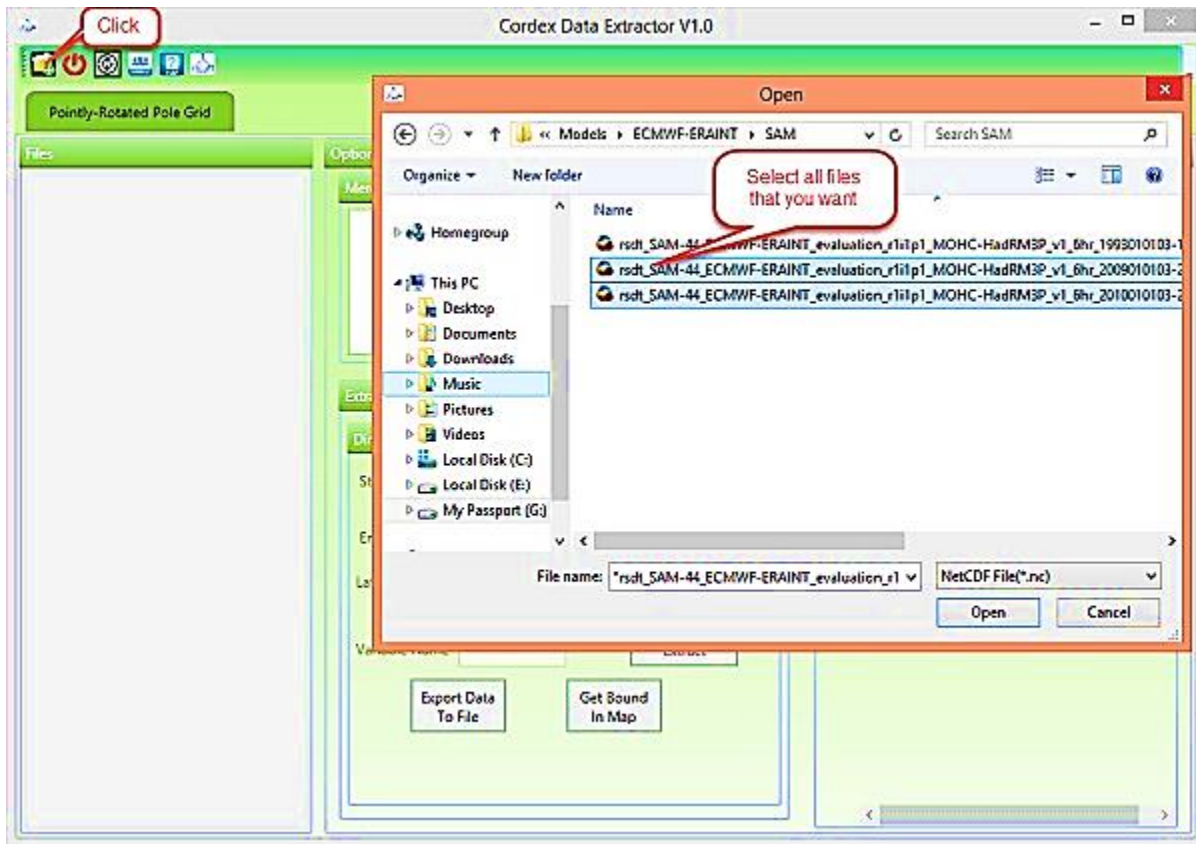
This software operates seamlessly with minimal user input, eliminating the need for a help file. All calculations are performed within the software's backend code. In 'CORDEX Data Extractor,' users only need to input their preferred latitude and longitude (which should be on the spatial border of the file), specify the start and end of the desired time series, and provide the variable name from the NetCDF file.

Users can conveniently access the list of variables on the right side of the page under the 'Files' column. Clicking on each file allows users to view the list of variables within the CORDEX file. This versatile tool is capable of extracting data



from any CORDEX NetCDF file across various time scales, models, RCM models, RCP scenarios, and domains.

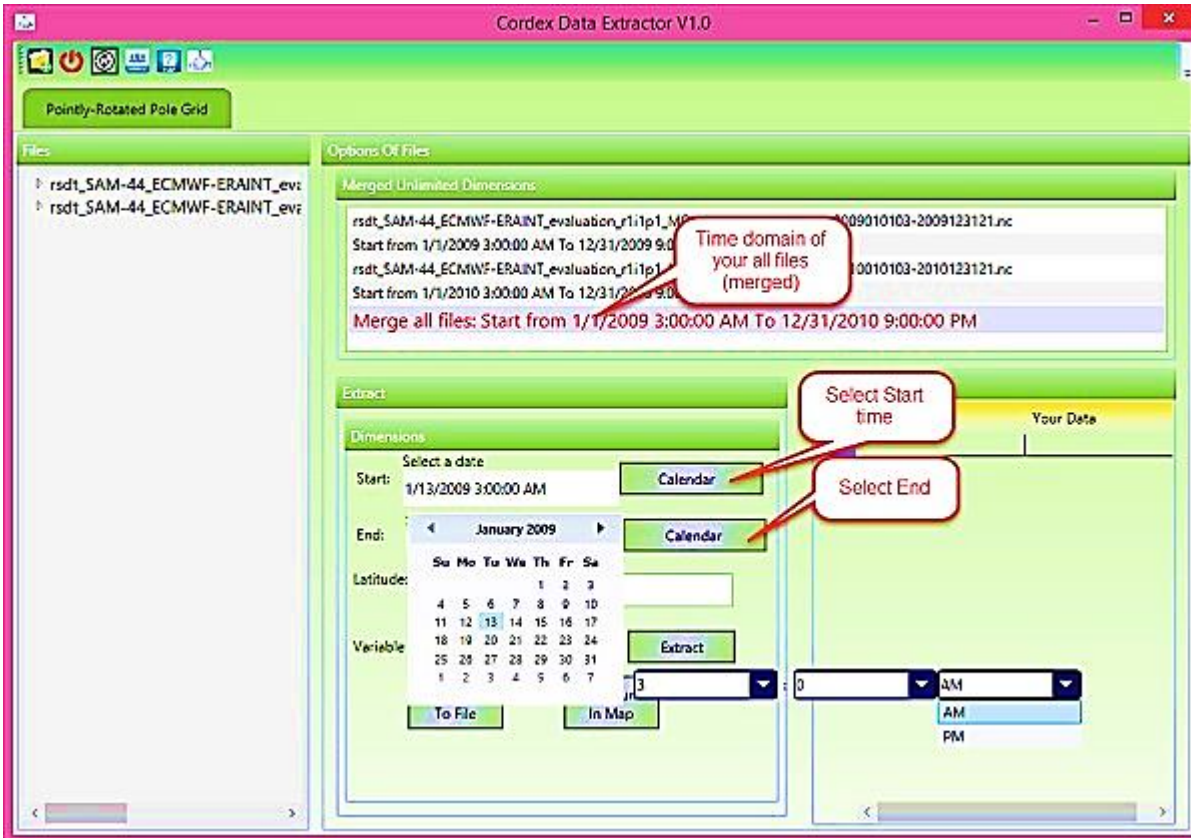
In the initial step, please select the NetCDF files using the icon located at the top left of the toolbar. Once the files are selected, if the rotation axis in the file differs from that on the website, the tool will prompt you to confirm one of them.



In the Merged Unlimited Dimensions section, there is a red line indicating the minimum and maximum dates available for selection. In the Dimension section,



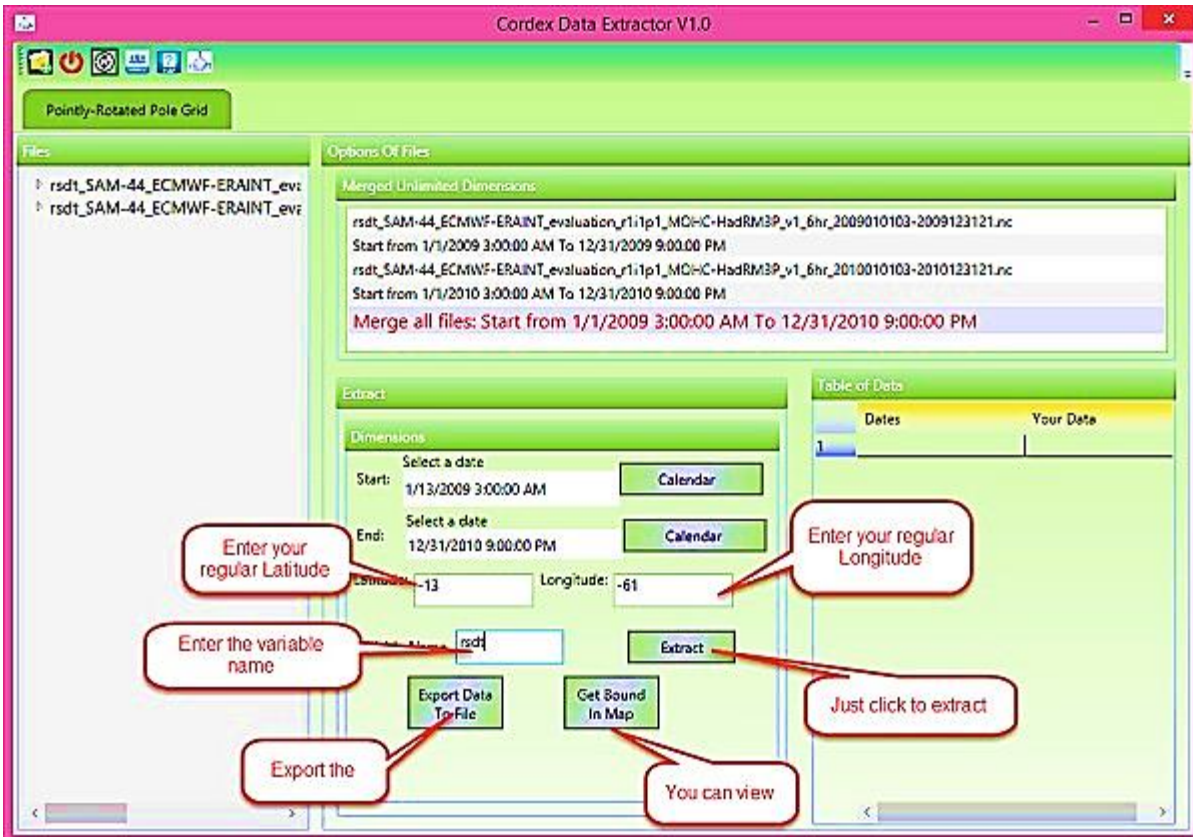
you can freely choose any start and end dates within the time domain delineated by the red line.



Input your standard coordinates (latitude and longitude) in decimal format, then specify the variable name. Simply click the 'Extract' button to effortlessly retrieve the required time series.



There are two additional buttons available: one to save the result in a file (CSV format is recommended), and another to visualize the bounds of CORDEX domains by clicking on the 'Get Bound In Map' button.





Notice:

- Kindly enter your standard (native) latitude and longitude.
- Input your latitude and longitude at the spatial bounds of the file. The software displays the bounds of the domain in the top bar.
- For monthly data, the software indicates the middle of the month (16th day of the month) for each cell.
- Disregard hours and minutes on the calendar for monthly, yearly, or daily data.
- The software marks the start and end of time with a red line after your file is displayed.
- You can export the data to Excel, CSV, or text formats.